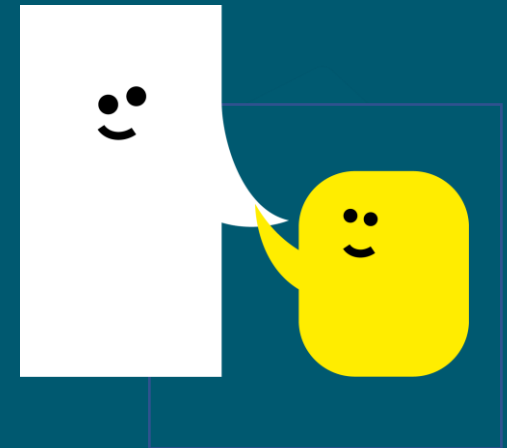


Educational Psychologist

Recruitment Pack for Candidates
June 2024



A Speech and
Language UK school



About Meath



A Speech and
Language UK school

Meath, a Speech and Language UK School (www.meathschool.org.uk) based in Ottershaw, Surrey is a day and residential non-maintained primary special school for up to 75 pupils aged 4 to 11 years, where Speech and/or Language Disorder and associated difficulties is the primary need, including children with high functioning Autism.

Our most recent Ofsted report (2023) is highly positive about the work of the school and the progress which our children make. “Pupils are happy and safe, and they enjoy being in school. They comment that ‘everyone can have friends here’.”

“The values of ‘talk, learn, grow’ are at the heart of all that the school does. Every aspect of learning is centred around equipping pupils to become confident and independent communicators.”

“The harmonious collaboration between the therapy and education teams forms the core provision. Therapy programmes are seamlessly intertwined throughout all lessons, and every pupil benefits from this enrichment.”



A Speech and
Language UK school

About Speech and Language UK



At **Speech and Language UK**, we want every child to face the future with confidence. For 1.9 million children in the UK, learning to talk and understand words feel like an impossible hurdle. Without the right help, this can destroy their world. They feel disconnected from their family. Unable to make friends. Unfairly punished for not following instructions they don't understand. What does the future hold for them?

We must reach children earlier, to make sure every child has the skills to face the future. We design innovative tools and training for thousands of nursery staff and teachers. We give families the confidence and skills to help their child. And we put pressure on politicians to prioritise support for children. Too many children are left waiting to be understood. Help us bring speech and language skills into the spotlight so they can all flourish.

For more information about Speech and Language UK, its work and values go to or follow-us on Twitter @SpeechAndLangUK



Principal's Welcome

It is with great pleasure that I welcome you to share the experience we have at Meath. We are a school dedicated to ensuring every child learns to communicate, gets a positive learning experience and feels a sense of belonging and security to be themselves and flourish by overcoming their barrier to learning. Our school is emersed in the total communication approach, so whatever the communication need, there is a way to get past it.

We at Meath, take great pride in the work we do and the progress we see of individual children. We believe that we open doors and support children to be strong independent communicators and learners. We offer a way to ensure they are heard and can give their valued voice and opinion by whatever means.

We want to prepare children for the next stage of their education and give them the tools to independently access the learning and education which will provide them with greater life choices and experiences. We want every child to **TALK, LEARN,** and **GROW,** we want them to 'talk' through any means possible, learn and empower them to grow as independent citizens. Our collaborative and immersive environment allows children to be effective communicators and learn various means to have their voice heard. We work as a multi-disciplinary team to ensure the best expertise is shared and taught so that we drive progress forward and ensure we are providing the most evidence-based approach to our practice.

Majella Delaney
Principal

**“Meath School
has been amazing
– we’ve got our
little boy back!
He’s made lots of
friends, and he’s
understanding so
much more.”**



The Role

Thank you for your interest in joining our Assessment Service at our Ofsted 'Outstanding' school in Surrey.

Speech and Language UK's Bill Harrison Assessment Service is an Independent Assessment Service based on the site of Meath School. The multi-disciplinary team includes specialist teachers, speech and language therapists, an occupational therapist and an educational psychologist.

We are looking for an enthusiastic and committed Educational Psychologist who enjoys working as part of a friendly and supportive multi-disciplinary team to assess the educational needs of children with SEND.

You will have considerable post qualification experience as well as experience working in an educational setting. A good knowledge of the range of specialist educational provisions in Surrey and the surrounding counties would be a distinct advantage. You will be passionate about helping school aged children with special needs reach their potential.

This is a wonderful opportunity to work with a great professional community and the opportunity to support children and their families in understanding their needs and accessing the relevant educational support.

The assessment centre has two well stocked playrooms and dedicated office space. The team benefit from administrative and clerical support as well as time from an intern (usually a psychology or linguistics student).

The assessment centre is open term time only.



What we offer

Meath, a Speech and Language UK School is a fantastic place to work, with benefits including;

- Annual salary reviews
- Employee assistance programme providing a confidential helpline
- Supportive and paid sick leave, if needed
- 1 wellbeing day to be taken during term time each year
- A team of Mental Health First Aiders in school
- A supportive culture that aims to promote positive mental health and wellbeing of staff
- Life events celebrated
- Staff appreciation gestures throughout the year
- A friendly, passionate and enthusiastic team dedicated to getting the best outcomes for our young people
- Free optional flu jab in the Winter
- Contributory pension scheme
- Life assurance cover
- Enhanced maternity and paternity leave
- Free eye test
- Interest-free annual season ticket loan and bike loan
- Plenty of onsite parking
- Discounted staff lunches
- Access to hundreds of exclusive perks, discounts and wellness resources through Perkbox
- A comprehensive induction programme so you can hit the ground running
- Continued professional development and training opportunities, and regular professional support





Job Description

Job Title: Assessment Centre Educational Psychologist

Working Pattern: 3 days per week, with a possibility of more days
Part-time and permanent contract
(working term time plus three weeks to be used flexibly throughout the year) with 10 weeks paid holiday.

Annual Salary: £47,930 to £50,360 FTE
(actual £28,758 to £30,216) with opportunity to progress further within role.



A Speech and
Language UK school

Job Description

Position: Educational Psychologist

Reporting to: Assessment Centre Manager

Main purpose of the post

- To promote the educational, emotional and personal development of pupils (4-19) through the application of psychology.
- To provide detailed assessment of children and young people attending the Speech and Language UK Assessment Centre using both formal (standardised) and informal (qualitative) assessment approaches.
- Make recommendations on the holistic needs of pupils with a wide range of learning profiles, with a specific focus on pupils with Speech, Language and Communication Needs (SLCN) and Social Communication Disorders including Autism.
- To enable the schools within Speech and Language UK to fulfil their statutory duties relating to children who have, or may have, special educational needs and/or disability.
- To provide psychological consultation, assessment and interventions to schools within Speech and Language UK.
- To provide robust, reflective, informed and high-quality educational psychology support.

Main Duties

- To carry out thorough and detailed assessment of children and young people's learning profile within a multi-disciplinary team and offer compassionate and accurate verbal feedback.
- Produce high quality, professional reports and recommendations within deadlines.
- To support and advise team members, parents, local authorities and other commissioners on EHCPs.
- To work independently, to organise time/workload efficiently, and meet deadlines as required.
- Commitment to teamwork and multidisciplinary working, sharing and developing ideas and practice, and feeding back to others from own CPD developments.
- Attend and participate in regular meetings and participate in training and other learning activities, as required.
- To support Speech and Language UK in developing its capacity to meet the needs of students with Speech, Language and Communication Needs (SLCN) and High Functioning Autism (formally Asperger's).
- Apply the SEND code of practice principles to the psychology you promote in all your work

Changing young lives.

- To advise teachers and school staff through consultation on how to support students with severe and complex Speech, Language and Communication Needs (SLCN) and Social Communication Disorders (including Autism).
- To support students directly as required through the use of psychological interventions, ensuring that all interventions are: evidenced based; anti-discriminatory and ensure the welfare of the child/young person is paramount.
- To contribute to the annual review and reassessment procedures for students who maintain an Education and Health Care Plan, including transition planning.
- To support the development of university students on placement at the Speech and Language UK Assessment Centre and Meath School.
- To work in close partnership with parents and carers.
- To keep abreast of current practice and research in the field of Educational Psychology professional practice.
- Deliver high quality training, INSET, or other CPD support to colleagues, or parents/carers
- Provide further professional development for staff.
- Meet the HCPC standards of proficiency and ethics.
- To undertake any other duties that may be reasonably deemed part of the role.

Additional Requirements:

- Provide cover for colleagues as directed by your manager.
- Safeguard at all times confidentiality of information relating to children, staff and Speech and Language UK's work.
- Abide by all relevant Speech and Language UK policies and procedures
- Support the ethos and practices of the school and contribute to school development.
- Be responsible for the efficient use of resources within the department.
- This list of duties and responsibilities is by no means exhaustive, and the post holder may be required to undertake other relevant and appropriate duties as required.

This job description is subject to regular review and appropriate modification.

PERSON SPECIFICATION – Educational Psychologist

CRITERIA	ESSENTIAL	DESIRABLE
Qualifications	<p>Registration with the Health and Care Professions Council</p> <p>A psychology degree (or BPS equivalent)</p> <p>A professional qualification in Educational Psychologist (doctorate, masters or equivalent)</p>	Relevant CPD portfolio
Experience	<p>Relevant experience in working with a paediatric caseload, ideally with severe and complex speech, language and communication needs</p> <p>Experience in administering and analysing a range of formal and informal assessments</p> <p>Experience in writing reports for parents and professionals</p> <p>Experience of working within a school setting</p> <p>Experience in sharing information accurately and sensitively to a range of audiences</p>	<p>Experience of specialist practice including dysphagia, AAC</p> <p>Experience in working as part of a multidisciplinary team</p> <p>Experience in offering training to colleagues, other professionals and parents</p> <p>Experience in supervising students</p>
Skills and Knowledge	<p>Knowledge and understanding of severe and complex speech and language disorders</p> <p>Knowledge and understanding of Education, Health and Care Plans</p> <p>Excellent interpersonal skills including the ability to interact positively with colleagues, parents and children</p> <p>Highly developed communication skills including clear, concise verbal and written communication in English</p> <p>Good organisational skills and the ability to prioritise</p>	<p>Knowledge and understanding of autistic spectrum disorders</p> <p>Knowledge of Sign Supported English / Makaton signing system</p> <p>Knowledge of current educational practices, and the National Curriculum</p> <p>An ability to deliver therapy to groups of children</p>



	<p>Ability to keep detailed and contemporaneous records</p> <p>Ability to write evidence-based reports to a very high standard</p> <p>An intellectually rigorous, creative and imaginative approach to therapy planning and delivery</p> <p>Ability to work flexibly</p> <p>Ability to work independently with children, making clinical decisions about intervention approaches for pupils who show a wide range of disorders and difficulties</p>	
Other Factors	<p>Ability to work effectively as part of the assessment team and class teams</p> <p>Ability to convey information clearly and concisely to colleagues, other professionals and parents</p> <p>A commitment to, and enthusiasm for Continuing Professional Development</p> <p>A commitment to the overall aims and ethos of Speech and Language UK and Meath School</p>	

Speech and Language UK

Summary of Terms and Conditions of Employment and Benefits

Job Title:	Educational Psychologist
Start Date:	September 2024
Location:	Meath School, Brox Road, Ottershaw, Surrey, KT16 0LF
Annual Salary:	£47,930 to £50,360 FTE (actual £28,758 to £30,216)
Hours:	Three days per week (21 hours)
Working Weeks:	Working term time plus three weeks to be used flexibly throughout the year with 10 weeks paid holiday
Annual Leave:	10 weeks per holiday year
Disclosure & Barring Service Check:	The successful candidate's employment is subject to an enhanced DBS and barred list check.
Probation Period:	There is a 6 month probationary period for this post
Pension:	After 3 months, staff employed on a continuing contract, or temporary contract of minimum 6 months, are entitled to join the Speech and Language UK group pension scheme with Aviva. Employer contributions 4.5%, and the minimum employee contribution is 3%.
Life Assurance	Life cover for 4 x annual salary.
Perkbox:	Employee benefit providing hundreds of exclusive perks for staff ranging from discounts on shopping, entertainment and gifts, to gym membership, rewards, confidential employee assistance helpline and wellbeing resources.
Free Annual Flu Vaccination:	Free annual flu vaccination for all Speech and Language UK employees.
Payroll Giving	By joining the payroll giving scheme, you can donate to your chosen charity directly from your pay before tax is deducted.
Season Ticket Loan	Speech and Language UK offers eligible employees an interest free loan for the purchase of a season ticket for travel between home and the School.
Bike Loan	Speech and Language UK offers eligible employees an interest free loan for the purchase of a bicycle for commuting to work.

How to Apply

For an informal discussion please contact Kayleigh Turner, Assessment Centre Manager on 01932 872302 or email kayleigh.turner@meathschool.org.uk

To find out more about Meath School and Speech and Language UK visit www.meathschool.org.uk and www.speechandlanguage.org.uk

To apply please send the completed application form to sbm@meathschool.org.uk by **12pm Monday, 15th July 2024** Interviews will be held at Meath School. We will shortlist and interview whilst this vacancy remains live, so we encourage you to apply early.

Speech and Language UK is committed to safeguarding and promoting the welfare of children. We carry out appropriate vetting and verifications on all staff. Please find details of our safeguarding policy <https://primarysite-prodsorted.s3.amazonaws.com/meath-school/UploadedDocument/287d788d-21c2-40e1-8465-0d84fb30e68d/sgpolicy-2023-2024-updated-march24.pdf>

All shortlisted candidates will be subject to an online search covering content that is in the public domain. In line with Keeping Children Safe in Education the successful candidate's employment is subject to an enhanced DBS and barred list check. Thank you for your interest and we look forward to hearing from you.



meathschool.org.uk

Speechandlanguage.org.uk

Follow us @SpeechAndLangUK



A Speech and
Language UK school

